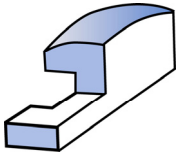


M

etrics of Individuality

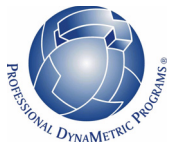


ProScan®: Defining strengths, workstyles and preferences

ProScan® is a non-threatening, quick, easy and reliable survey tool that is one of the most advanced instruments available. Statistical research of working adults enables the powerful ProScan® survey to produce reliable results to accurately assess a person's basic and preferred work styles. The survey examines combinations of specific traits that affect how the person works most effectively and reacts under stress. ProScan® focuses on strengths and motivators to help employers create an environment that reduces employee stress while improving energy and morale.

ProScan® reports measure:

- How a person functions most naturally
- The role the person feels the need to play
- How the person predictably comes across to others
- Energy resources
- Satisfaction index
- Stress levels
- Energy drain
- Decision-making style
- Communication style
- Leadership style
- Back-up style
- Negative environments
- Motivational elements
- Overriding needs survey



ProScan® reveals an individual's behavioral traits, linking natural strengths to company growth.